

ROBOTICS

# Product specification

IRB 1510



Trace back information:  
Workspace 23C version a8  
Checked in 2023-09-21  
Skribenta version 5.5.019

## **Product specification**

**IRB 1510**

**Document ID: 3HAC087871-001**

**Revision: A**

The information in this manual is subject to change without notice and should not be construed as a commitment by ABB. ABB assumes no responsibility for any errors that may appear in this manual.

Except as may be expressly stated anywhere in this manual, nothing herein shall be construed as any kind of guarantee or warranty by ABB for losses, damage to persons or property, fitness for a specific purpose or the like.

In no event shall ABB be liable for incidental or consequential damages arising from use of this manual and products described herein.

This manual and parts thereof must not be reproduced or copied without ABB's written permission.

Keep for future reference.

Additional copies of this manual may be obtained from ABB.

Original instructions.

© Copyright 2023 ABB. All rights reserved.  
Specifications subject to change without notice.

# Table of contents

Overview of this specification .....	7
<b>1 Description</b> .....	<b>9</b>
1.1 Structure .....	9
1.1.1 Introduction .....	9
1.1.2 Different robot versions .....	11
1.2 Applicable standards .....	14
1.3 Installation .....	16
1.3.1 Introduction .....	16
1.3.2 Operating requirements .....	17
1.3.3 Mounting the manipulator .....	18
1.4 Calibration and reference .....	21
1.4.1 Calibration methods .....	21
1.4.2 Fine calibration .....	23
1.5 Robot load and diagrams .....	24
1.5.1 Introduction .....	24
1.5.2 Load diagrams .....	25
1.5.3 Maximum load and moment of inertia for full and limited axis (center line down) movement .....	27
1.5.4 Wrist torque .....	29
1.6 Mounting of equipment .....	30
1.7 Robot motion .....	34
1.7.1 Introduction .....	34
1.7.2 Performance according to ISO 9283 .....	36
1.7.3 Velocity .....	37
1.7.4 Robot stopping distances and times .....	38
1.8 Customer connections .....	39
1.9 Maintenance and troubleshooting .....	40
<b>2 Specification of variants and options</b> .....	<b>41</b>
2.1 Introduction to variants and options .....	41
2.2 Manipulator .....	42
2.3 Floor cables .....	44
2.4 Process .....	45
2.4.1 Process .....	45
2.4.2 Process equipment .....	46
2.5 User documentation .....	47
<b>3 Accessories</b> .....	<b>49</b>
3.1 Introduction to accessories .....	49
<b>Index</b> .....	<b>51</b>

**This page is intentionally left blank**

# Overview of this specification

## About this product specification

It describes the performance of the manipulator or a complete family of manipulators in terms of:

- The structure and dimensional prints
- The fulfilment of standards, safety and operating requirements
- The load diagrams, mounting of extra equipment, the motion and the robot reach
- The specification of variant and options available

## Usage

Product specifications are used to find data and performance about the product, for example to decide which product to buy. How to handle the product is described in the product manual.

## Users

It is intended for:

- Product managers and product personnel
- Sales and marketing personnel
- Order and customer service personnel

## References

Reference	Document ID
<i>Product specification - Controller IRC5</i> IRC5 with main computer DSQC1000.	3HAC047400-001
<i>Product specification - Controller software IRC5</i> IRC5 with main computer DSQC1000 and RobotWare 5.6x.	3HAC050945-001
<i>Product specification - Controller software IRC5</i> IRC5 with main computer DSQC1000 and RobotWare 6.	3HAC050945-001
<i>Product manual - IRB 1510</i>	3HAC087870-001
<i>Product specification - Robot user documentation, IRC5 with RobotWare 6</i>	3HAC052355-001

## Revisions

Revision	Description
A	First edition.

**This page is intentionally left blank**



# 1 Description

## 1.1 Structure

### 1.1.1 Introduction

---

**Robot family**

ABB's IRB 1510 robot is a dedicated arc welding robot available in one version. It has a compact process upper arm designed for integrated dressing packages for arc welding. The IRB 1510ID-4/1.5 is a part of the ArcPack Lean concept.

---

**Software product range**

We have added a range of software products - all falling under the umbrella designation of Active Safety - to protect not only personnel in the unlikely event of an accident, but also robot tools, peripheral equipment and the robot itself.

---

**Operating system**

The robot is equipped with the IRC5 controller and robot control software, RobotWare. RobotWare supports every aspect of the robot system, such as motion control, development and execution of application programs, communication etc. See *Product specification - Controller IRC5 with FlexPendant*.

---

**Safety**

Safety standards valid for complete robot, manipulator and controller.

---

**Additional functionality**

For additional functionality, the robot can be equipped with optional software for application support - for example welding, communication features - network communication - and advanced functions such as multitasking, sensor control etc. For a complete description on optional software, see the *Product specification - Controller software IRC5*.

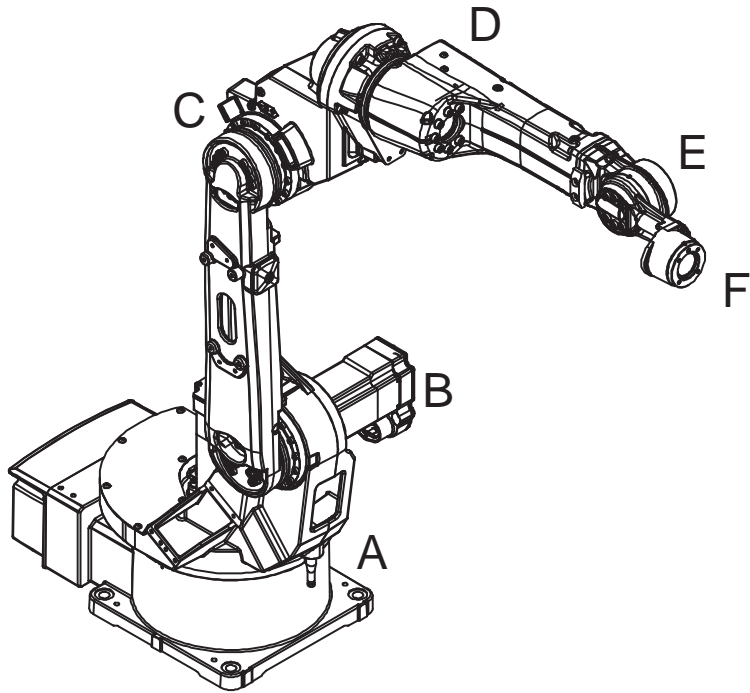
*Continues on next page*

# 1 Description

## 1.1.1 Introduction

*Continued*

### Manipulator axes



xx110000294

Pos	Description	Pos	Description
A	Axis 1	B	Axis 2
C	Axis 3	D	Axis 4
E	Axis 5	F	Axis 6

### 1.1.2 Different robot versions

#### General

The IRB 1510 is available in one version and can only be mounted on the floor or inverted (no tilting allowed around X-axis or Y-axis). See [Robot motion on page 34](#) for limitations.

Robot type	Handling capacity (kg)	Reach (m)
IRB 1510ID	4 kg	1.5 m

#### Manipulator weight

Robot	Weight
IRB 1510ID-4/1.5	170 kg

#### Other technical data

Data	Description	Note
Airborne noise level	The sound pressure level outside the working space	< 70 dB (A) Leq (acc. to Machinery directive 2006/42/EG)

#### Power consumption at max load

Type of movement	IRB 1510ID-4/1.5
ISO cube Max. velocity	0.75 kW
Robot in calibration position	IRB 1510ID-4/1.5
Brakes engaged	0.206 kW
Brakes disengaged	0.233 kW

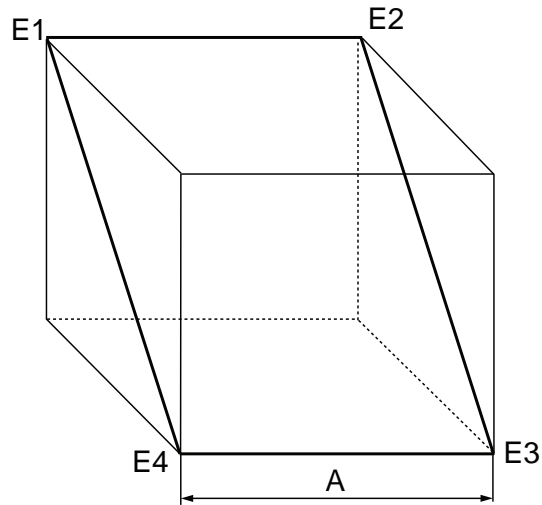
*Continues on next page*

# 1 Description

## 1.1.2 Different robot versions

*Continued*

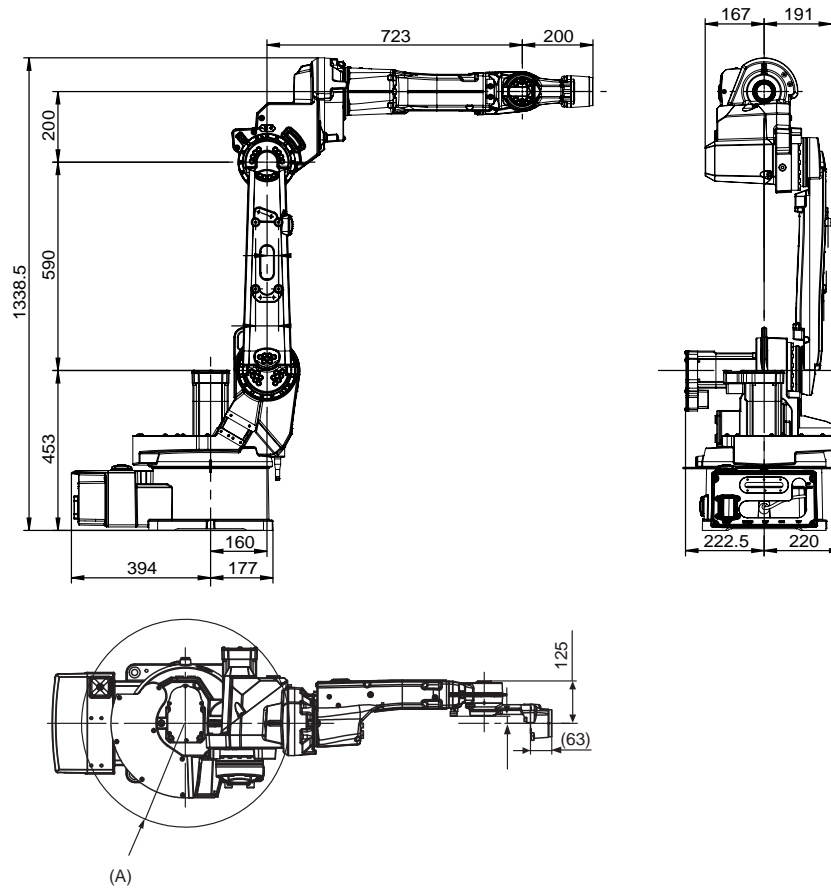
Path E1-E2-E3-E4 in the ISO Cube, max.load.



xx100000101

Pos	
A	400 mm

## Dimensions IRB 1510ID-4/1.5



xx110000295

*Continues on next page*

## 1 Description

---

### 1.1.2 Different robot versions

*Continued*

Pos	Description
A	Minimum turning radius R=307 mm

# 1 Description

## 1.2 Applicable standards

## 1.2 Applicable standards



### Note

The listed standards are valid at the time of the release of this document. Phased out or replaced standards are removed from the list when needed.

### General

The product is designed in accordance with ISO 10218-1:2011, Robots for industrial environments - Safety requirements -Part 1 Robots, and applicable parts in the normative references, as referred to from ISO 10218-1:2011. In case of deviations from ISO 10218-1:2011, these are listed in the declaration of incorporation which is part of the product delivery.

### Normative standards as referred to from ISO 10218-1

Standard	Description
ISO 9283:1998	Manipulating industrial robots - Performance criteria and related test methods
ISO 10218-2	Robots and robotic devices - Safety requirements for industrial robots - Part 2: Robot systems and integration
ISO 12100	Safety of machinery - General principles for design - Risk assessment and risk reduction
ISO 13849-1:2006	Safety of machinery - Safety related parts of control systems - Part 1: General principles for design
ISO 13850	Safety of machinery - Emergency stop - Principles for design
IEC 60204-1	Safety of machinery - Electrical equipment of machines - Part 1: General requirements

### Deviations from ISO 10218-1:2011 for IRC5 with MultiMove

A deviation exists towards ISO 10218-1:2011, paragraph 5.9 *Control of simultaneous motion*, for the option MultiMove. See the application manual for MultiMove.

### Other standards used in design

Standard	Description
ISO 9787:2013	Robots and robotic devices -- Coordinate systems and motion nomenclatures
IEC 61000-6-2	Electromagnetic compatibility (EMC) – Part 6-2: Generic standards – Immunity standard for industrial environments
IEC 61000-6-4	Electromagnetic compatibility (EMC) – Part 6-4: Generic standards – Emission standard for industrial environments
ISO 13732-1:2006	Ergonomics of the thermal environment - Part 1
IEC 60974-1:2012 <sup>i</sup>	Arc welding equipment - Part 1: Welding power sources
IEC 60974-10:2014 <sup>j</sup>	Arc welding equipment - Part 10: EMC requirements
ISO 14644-1:2015 <sup>ii</sup>	Classification of air cleanliness

Continues on next page

Standard	Description
IEC 60529:1989 + A2:2013	Degrees of protection provided by enclosures (IP code)

- i Only valid for arc welding robots. Replaces IEC 61000-6-4 for arc welding robots.
- ii Only robots with protection Clean Room.

# 1 Description

---

## 1.3.1 Introduction

## 1.3 Installation

### 1.3.1 Introduction

---

#### General

IRB 1510ID-4/1.5 can only be mounted on the floor or inverted (no tilting allowed around X-axis or Y-axis). An end effector with max. weight of 4 kg including payload, can be mounted on the tool flange. See [Robot load and diagrams on page 24](#).

Extra equipment can be mounted on the upper arm. See [Mounting of equipment on page 30](#).

---

#### Extra loads

Extra load, which is included in the load diagrams, can be mounted on the upper arm. See [Robot load and diagrams on page 24](#).

---

#### Working range

Electronic Position Switches can be used on all axes for position indication of the manipulator.



## 1.3.2 Operating requirements

### Protection standards

Robot version	Protection Standard IEC60529
IRB 1510ID-4/1.5	IP 40

### Explosive environments

The robot must not be located or operated in an explosive environment.

### Ambient temperature

Description	Standard/Option	Temperature
Manipulator during operation	Standard	+ 5 °C <sup>i</sup> (+ 41 °F) to + 45 °C (+ 113 °F)
For the controller	Standard/Option	See <i>Product specification - Controller IRC5 with FlexPendant</i>
Complete robot (incl. controller) during transportation and storage	Standard	- 25 °C (- 13 °F) to + 55 °C (+ 131 °F)
For short periods (not exceeding 24 hours)	Standard	up to + 70 °C (+ 158 °F)

<sup>i</sup> At low environmental temperature < 10 °C is, as with any other machine, a warm-up phase recommended to be run with the robot. Otherwise there is a risk that the robot stops or run with lower performance due to temperature dependent oil and grease viscosity.

### Relative humidity

Description	Relative humidity
Complete robot during operation, transportation and storage	Max. 95% at constant temperature

# 1 Description

## 1.3.3 Mounting the manipulator

### 1.3.3 Mounting the manipulator

#### General

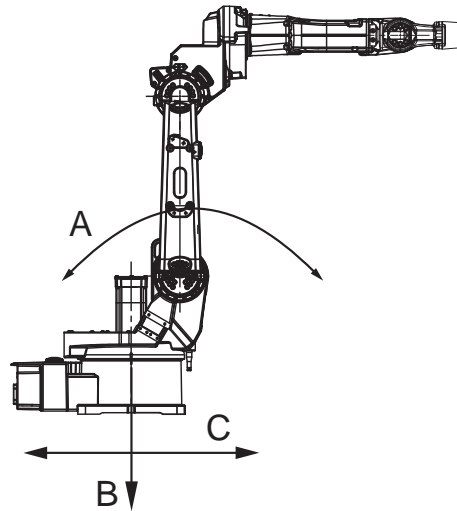
Maximum load in relation to the base coordination system. See Figure below.

#### Floor Mounted

Force	Endurance load (in operation)	Max. load (emergency stop)
Force xy	$\pm 1900 \text{ N}$	$\pm 4300 \text{ N}$
Force z	$1850 \pm 900 \text{ N}$	$1850 \pm 2350 \text{ N}$
Torque xy	$\pm 1550 \text{ Nm}$	$\pm 3900 \text{ Nm}$
Torque z	$\pm 390 \text{ Nm}$	$\pm 1200 \text{ Nm}$

#### Suspended

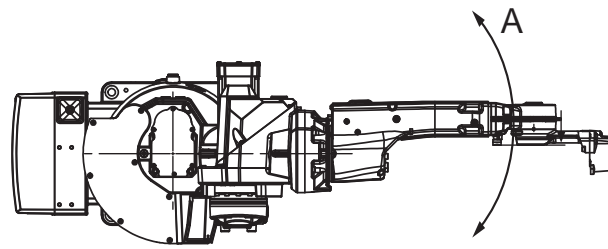
Force	Endurance load (in operation)	Max. load (emergency stop)
Force xy	$\pm 1900 \text{ N}$	$\pm 4250 \text{ N}$
Force z	$-1850 \pm 750 \text{ N}$	$-1850 \pm 2350 \text{ N}$
Torque xy	$\pm 1550 \text{ Nm}$	$\pm 3900 \text{ Nm}$
Torque z	$\pm 390 \text{ Nm}$	$\pm 1200 \text{ Nm}$



xx1100000296

Pos	Description
A	Torque <sub>xy</sub> ( $T_{xy}$ )
B	Force <sub>z</sub> ( $F_z$ )
C	Force <sub>xy</sub> ( $F_{xy}$ )

Continues on next page



xx110000297

Pos	Description
A	Torque <sub>z</sub> ( $T_z$ )

### Note regarding $M_{xy}$ and $F_{xy}$

The bending torque ( $M_{xy}$ ) can occur in any direction in the XY-plane of the base coordinate system.

The same applies to the transverse force ( $F_{xy}$ ).

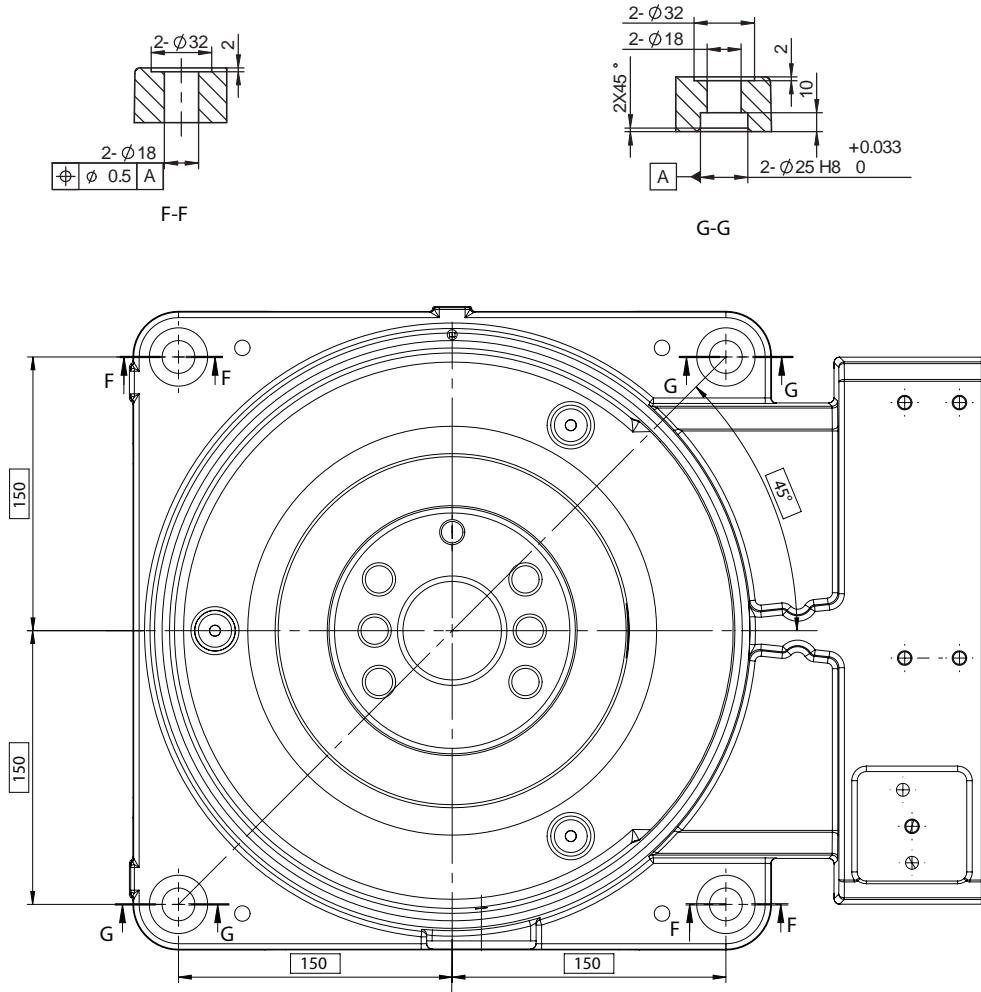
*Continues on next page*

# 1 Description

## 1.3.3 Mounting the manipulator

Continued

### Fastening holes robot base



xx110000293

### Attachment bolts, specification

The table below specifies required bolts and washers for securing the robot at installation site.

Specification	Description
Attachment bolts, 4 pcs	M16 x 60 (installation directly on foundation) M16 x 70/80 (installation on foundation or base plate, using guiding sleeves)
Washers, 4 pcs	17 x 30 x 3
Quality	Quality 8.8
Tightening torque	200 Nm

## 1.4 Calibration and reference

### 1.4.1 Calibration methods


#### Overview

This section specifies the different types of calibration and the calibration methods that are supplied by ABB.

The original calibration data delivered with the robot is generated when the robot is floor mounted. If the robot is not floor mounted, then the robot accuracy could be affected. The robot needs to be calibrated after it is mounted.

More information is available in the product manual.

#### Types of calibration

Type of calibration	Description	Calibration method
Standard calibration	The calibrated robot is positioned at calibration position. Standard calibration data is found on the SMB (serial measurement board) or EIB in the robot.	Calibration Pendulum
Absolute accuracy calibration (optional)	Based on standard calibration, and besides positioning the robot at synchronization position, the Absolute accuracy calibration also compensates for: <ul style="list-style-type: none"> <li>Mechanical tolerances in the robot structure</li> <li>Deflection due to load</li> </ul> <p>Absolute accuracy calibration focuses on positioning accuracy in the Cartesian coordinate system for the robot.</p> <p>Absolute accuracy calibration data is found on the serial measurement board (SMB) or other robot memory.</p> <p>A robot calibrated with Absolute accuracy has a sticker next to the identification plate of the robot (IRC5).</p> <p>To regain 100% Absolute accuracy performance, the robot must be recalibrated for absolute accuracy after repair or maintenance that affects the mechanical structure.</p> 	CalibWare
Optimization	Optimization of TCP reorientation performance. The purpose is to improve reorientation accuracy for continuous processes like welding and gluing. Wrist optimization will update standard calibration data for axes 4 and 5.	Wrist Optimization

*Continues on next page*

# 1 Description

---

## 1.4.1 Calibration methods

*Continued*

---

### Brief description of calibration methods

#### Calibration Pendulum method

Calibration Pendulum is a standard calibration method for calibration of many of ABB robots (except IRB 6400R, IRB 640, IRB 1400H, and IRB 4400S).

Two different routines are available for the Calibration Pendulum method:

- Calibration Pendulum II
- Reference calibration

The calibration equipment for Calibration Pendulum is delivered as a complete toolkit, including the *Operating manual - Calibration Pendulum*, which describes the method and the different routines further.

#### Wrist Optimization method

Wrist Optimization is a method for improving reorientation accuracy for continuous processes like welding and gluing and is a complement to the standard calibration method.

The actual instructions of how to perform the wrist optimization procedure is given on the FlexPendant.

#### CalibWare - Absolute Accuracy calibration

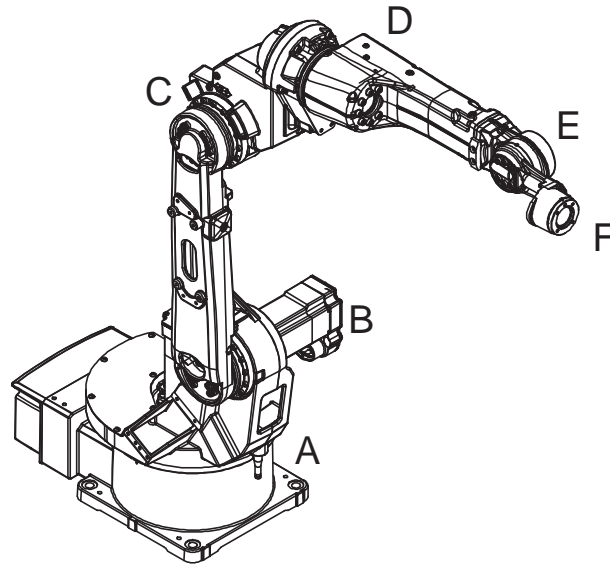
The CalibWare tool guides through the calibration process and calculates new compensation parameters. This is further detailed in the *Application manual - CalibWare Field*.

If a service operation is done to a robot with the option Absolute Accuracy, a new absolute accuracy calibration is required in order to establish full performance. For most cases after replacements that do not include taking apart the robot structure, standard calibration is sufficient.

1.4.2 Fine calibration

General

Fine calibration is made using the Calibration Pendulum, see *Operating manual - Calibration Pendulum*.



xx110000294

Pos	Description	Pos	Description
A	Axis 1	B	Axis 2
C	Axis 3	D	Axis 4
E	Axis 5	F	Axis 6

Calibration

Calibration	Position
Calibration of all axes	All axes are in zero position
Calibration of axis 1 and 2	Axis 1 and 2 in zero position
	Axis 3 to 6 in any position
Calibration of axis 1	Axis 1 in zero position
	Axis 2 to 6 in any position

# 1 Description

---

## 1.5.1 Introduction

## 1.5 Robot load and diagrams

### 1.5.1 Introduction

---

#### Information



#### WARNING

It is very important to always define correct actual load data and correct payload of the robot. Incorrect definitions of load data can result in overloading of the robot.

If incorrect load data is used, and/or if loads outside the load diagram are used, the following parts can be damaged due to overload:

- motors
- gearboxes
- mechanical structure



#### WARNING

In RobotWare, the service routine LoadIdentify can be used to determine correct load parameters. The routine automatically defines the tool and the load.

See *Operating manual - IRC5 with FlexPendant*, for detailed information.



#### WARNING

Robots running with incorrect load data and/or with loads outside the load diagram, will not be covered by robot warranty.

---

#### General

The load diagrams include a nominal pay load inertia,  $J_0$  of  $0.012 \text{ kgm}^2$ , and an extra load of 10 kg (hose package included) at the upper arm housing. At different moment of inertia the load diagram will be changed. For robots that are allowed tilted, wall or inverted mounted, the load diagrams as given are valid and thus it is also possible to use RobotLoad within those tilt and axis limits.

---

#### Control of load case with RobotLoad

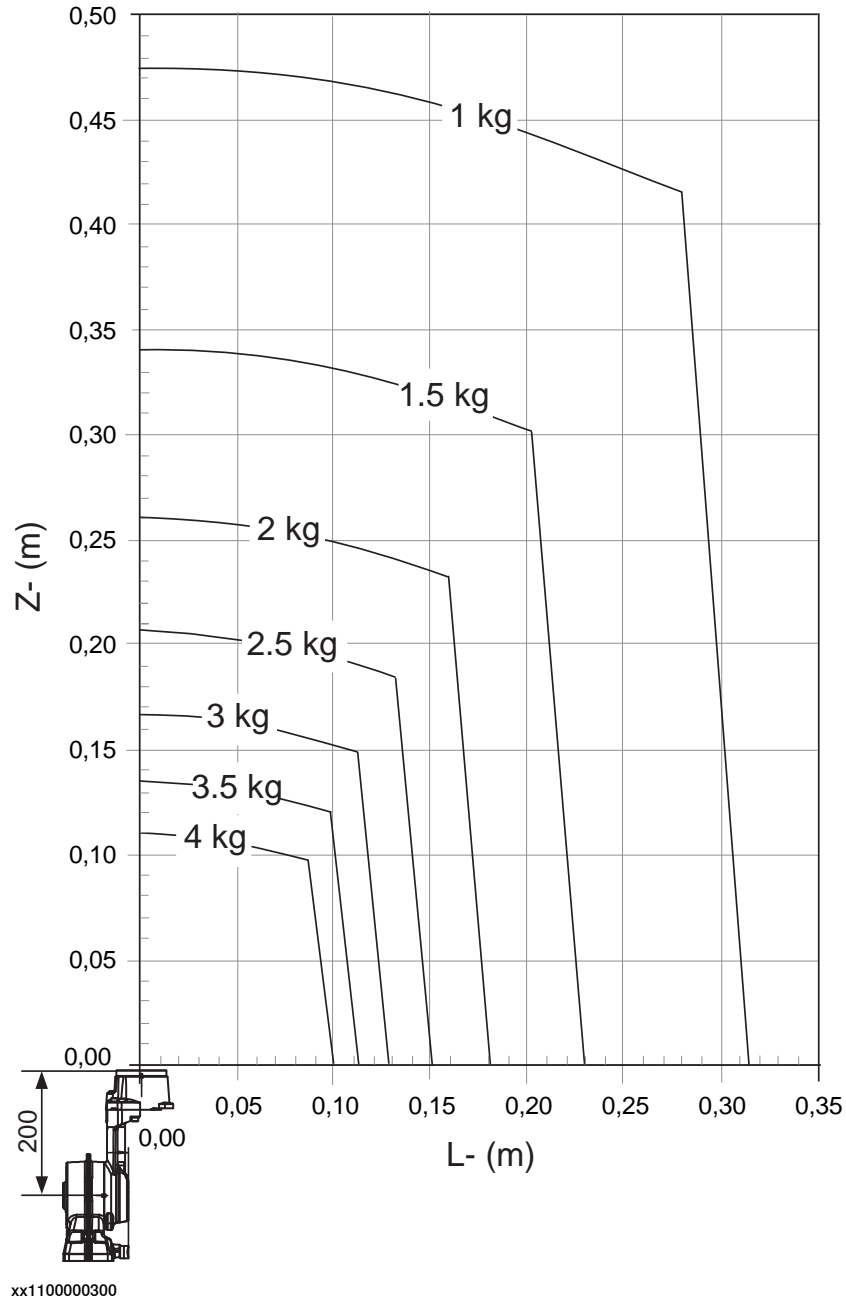
To verify a specific load case, use the RobotStudio add-in RobotLoad.

The result from RobotLoad is only valid within the maximum loads and tilt angles. There is no warning if the maximum permitted arm load is exceeded. For over-load cases and special applications, contact ABB for further analysis.



1.5.2 Load diagrams

IRB 1510ID-4/1.5



Extra load of 10 kg (hose package included) at the upper arm housing included in the load diagram.

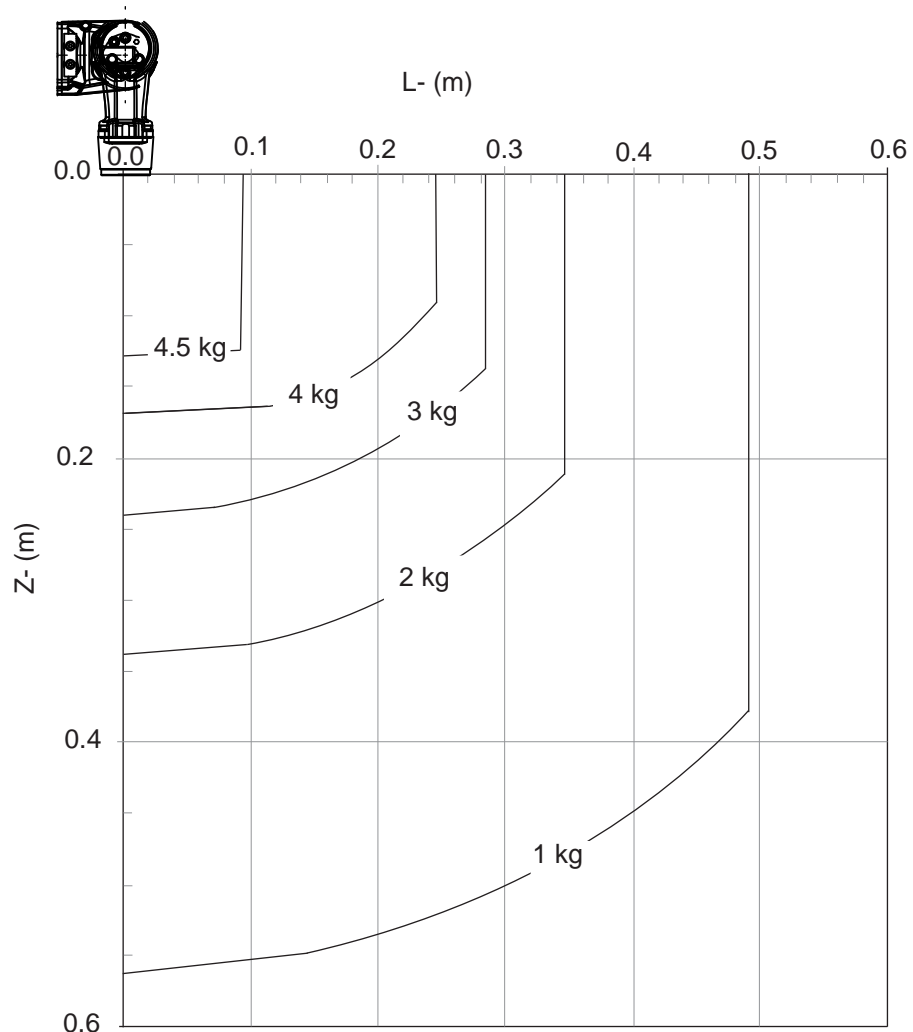
Continues on next page

# 1 Description

## 1.5.2 Load diagrams

Continued

### IRB 1510ID-4/1.5 "Vertical Wrist" ( $\pm 10^\circ$ )



xx1100000471

Extra load of 10 kg (hose package included) at the upper arm housing included in the load diagram.

For wrist down (turning disk faced downwards) with  $\pm 10^\circ$  deviation from vertical line.

	Description
Max load	4.5 kg
$Z_{\max}$	0.128 m
$L_{\max}$	0.093 m

1.5.3 Maximum load and moment of inertia for full and limited axis (center line down) movement

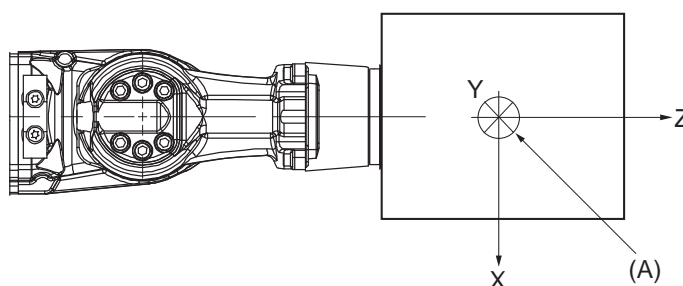
1.5.3 Maximum load and moment of inertia for full and limited axis (center line down) movement

General

Total load given as: Mass in kg, center of gravity (Z and L) in m and moment of inertia ( $J_{ox}$ ,  $J_{oy}$ ,  $J_{oz}$ ) in  $\text{kgm}^2$ .  $L = \text{sqr}(X^2 + Y^2)$ , see Figure below.

Full movement of axis 5 (+135° to -135°)

Axis	Robot type	Max. value
5	IRB 1510ID-4/1.5	$J5 = \text{Mass} \times ((Z + 0.200)^2 + L^2) + \max(J_{ox}, J_{oy}) \leq 0.58 \text{ kgm}^2$
6	IRB 1510ID-4/1.5	$J6 = \text{Mass} \times L^2 + J_{oz} \leq 0.24 \text{ kgm}^2$



xx110000301

Pos	Description
A	Center of gravity
Description	
$J_{ox}, J_{oy}, J_{oz}$	Max. moment of inertia around the X, Y and Z axes at center of gravity.

Limited axis 5, Center line down

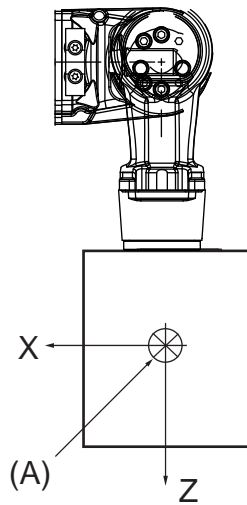
Axis	Robot type	Max. value
5	IRB 1510ID-4/1.5	$J5 = \text{Mass} \times ((Z + 0.200)^2 + L^2) + \max(J_{ox}, J_{oy}) \leq 0.58 \text{ kgm}^2$
6	IRB 1510ID-4/1.5	$J6 = \text{Mass} \times L^2 + J_{oz} \leq 0.24 \text{ kgm}^2$

Continues on next page

# 1 Description

## 1.5.3 Maximum load and moment of inertia for full and limited axis (center line down) movement

Continued



xx1100000475

Pos	Description
A	Center of gravity

	Description
$J_{ox}, J_{oy}, J_{oz}$	Max. moment of inertia around the X, Y and Z axes at center of gravity.

## 1.5.4 Wrist torque

### General

The table below shows the maximum permissible torque due to payload.



#### Note

The wrist torque values are for reference only, and should not be used for calculating permitted load offset (position of center of gravity) within the load diagram, since those also are limited by main axes torques as well as dynamic loads. Furthermore, arm loads will influence the permitted load diagram. To find the absolute limits of the load diagram, use the RobotStudio add-in RobotLoad.

Robot type	Max wrist torque axis 4 and 5	Max wrist torque axis 6	Max torque valid at load
IRB 1510ID-4/1.5	12.2 Nm	3.9 Nm	4 kg

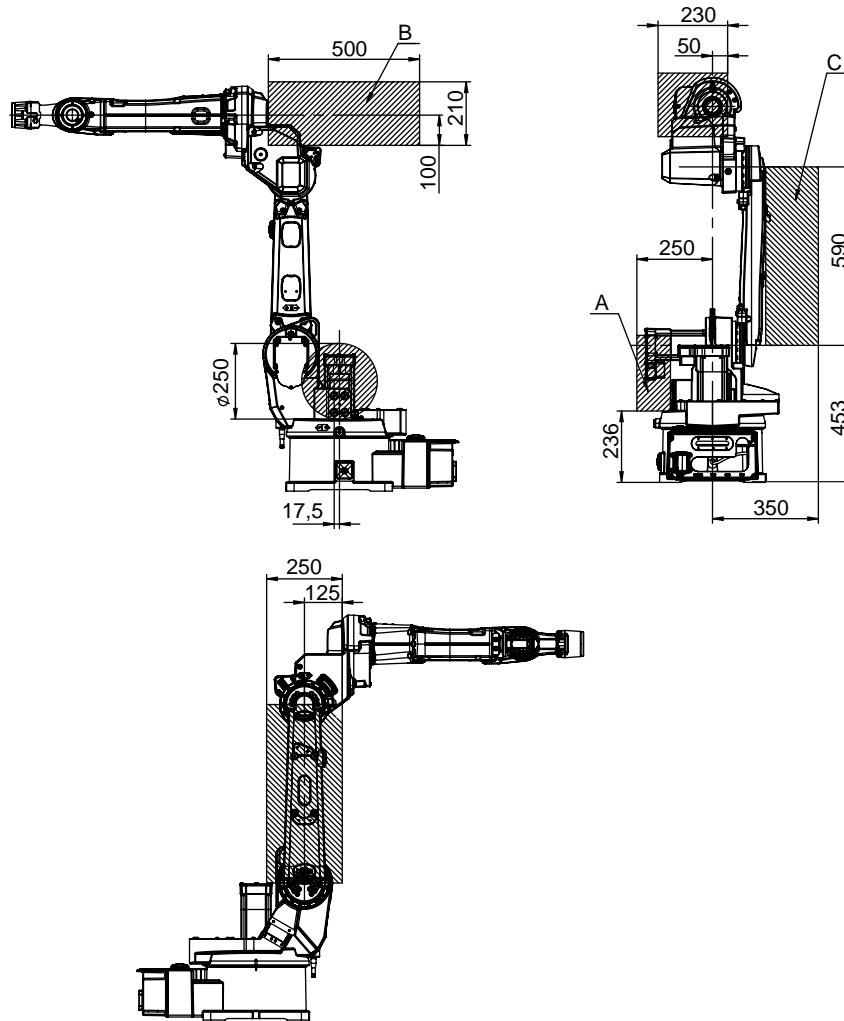
# 1 Description

## 1.6 Mounting of equipment

### 1.6 Mounting of equipment

#### Load areas

Extra loads can be mounted on the wrist, the upper arm housing, and on the frame. Load areas and permitted loads are shown in graphic below. The center of gravity of the extra load shall be within the marked load areas.



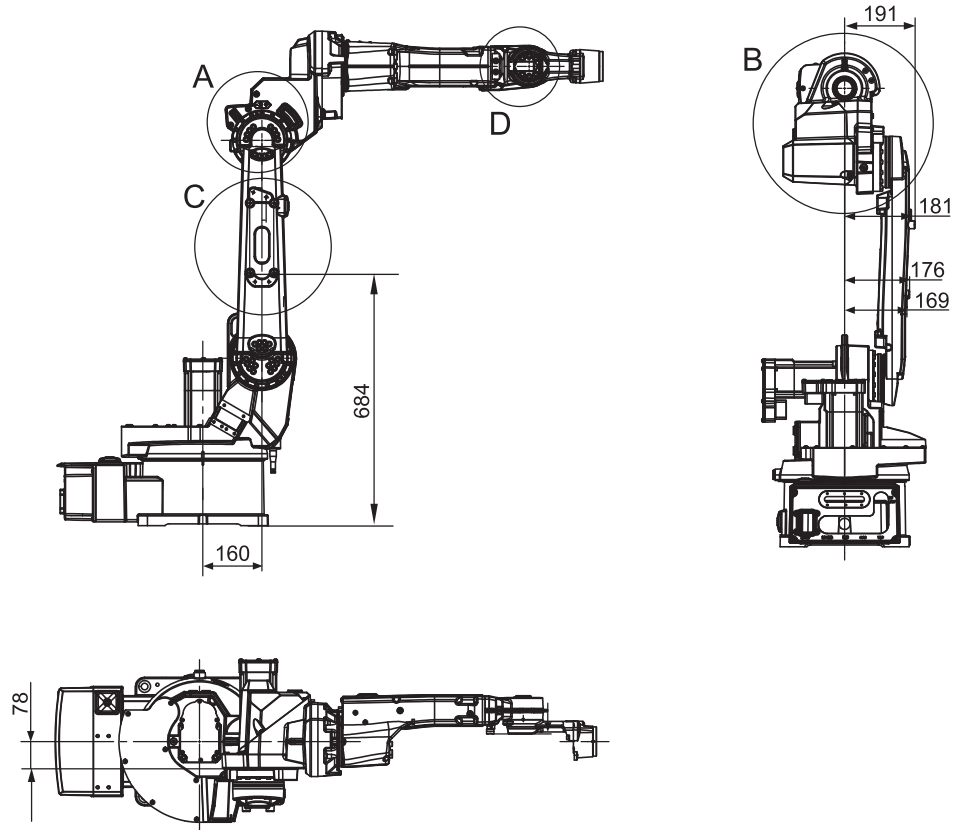
xx1100000299

Load area Robot	Max. load			
	A	B	C	B+C
IRB 1510ID-4/1.5	20 kg	10 kg	15 kg	25 kg

Continues on next page

Holes for mounting of extra equipment

The robot has holes for mounting extra equipment.



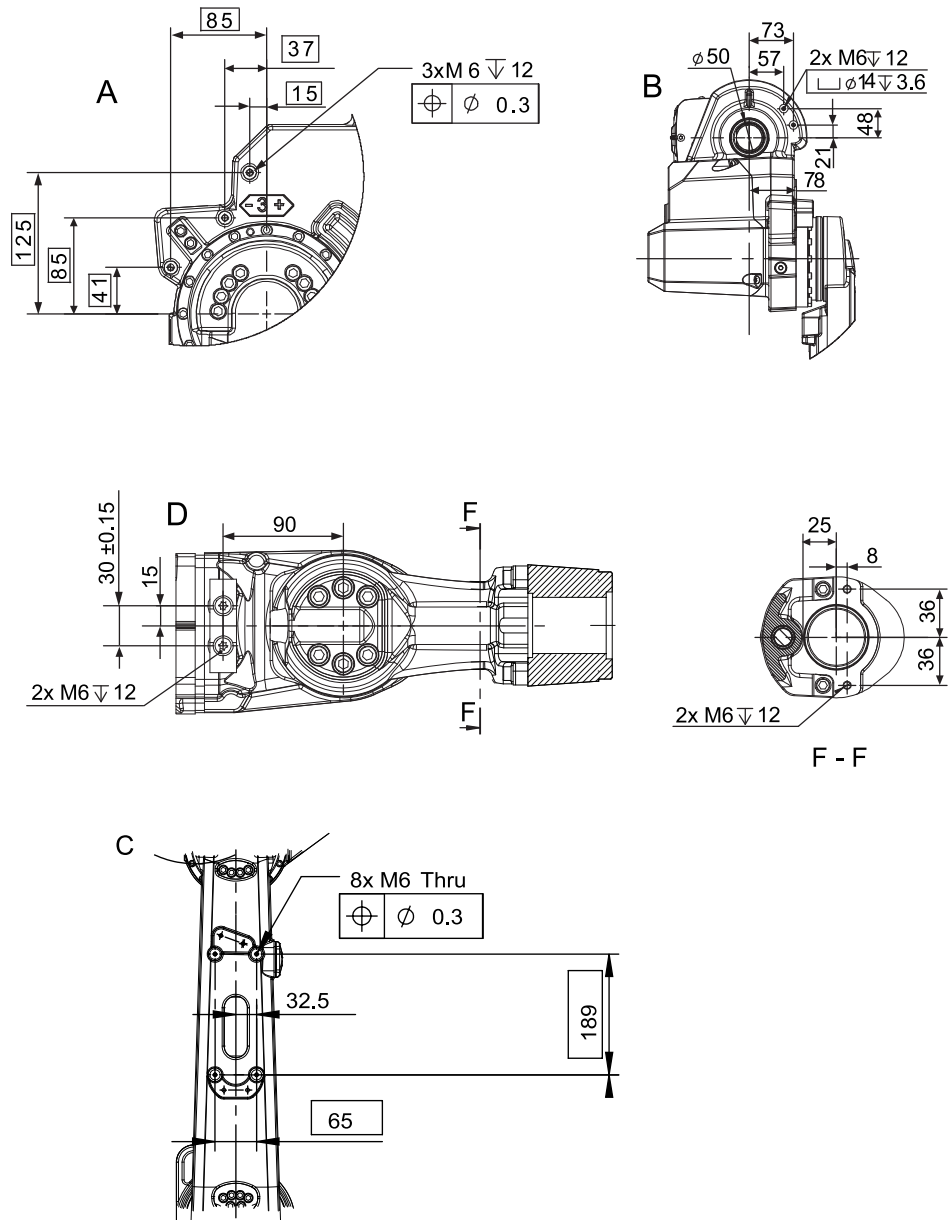
xx110000302

Continues on next page

# 1 Description

## 1.6 Mounting of equipment

Continued

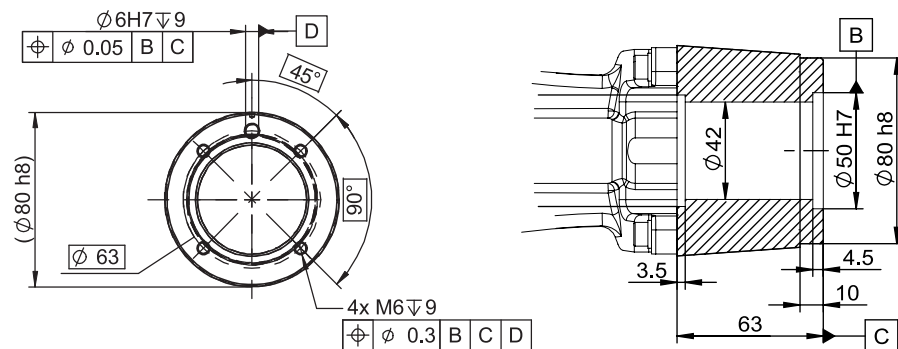


xx110000303

Continues on next page



### Robot tool flange



xx1100000305

### Fastener quality

When fitting tools on the tool flange, only use screws with quality 12.9. For other equipment use suitable screws and tightening torque for your application.

# 1 Description

## 1.7.1 Introduction

## 1.7 Robot motion

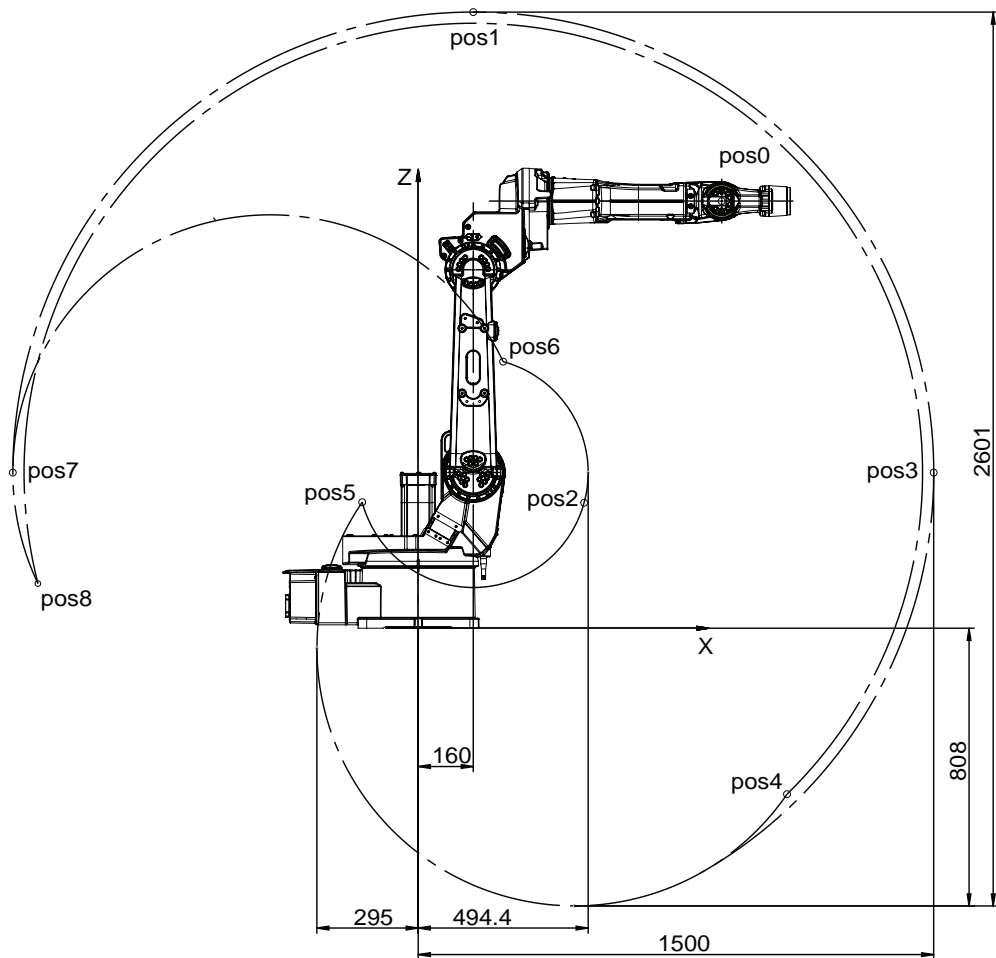
### 1.7.1 Introduction

#### IRB 1510ID-4/1.5

Axis	Type of motion	Range of movement
1	Rotation motion	+170° to -170°
2	Arm motion	+150° to -90°
3	Arm motion	+80° to -100°
4	Rotation motion	+155° to -155°
5	Bend motion	+135° to -135°
6	Turn motion	+200° to -200°

#### Positions at wrist center IRB 1510ID-4/1.5

Working range with extra mechanical stop on axis 3.



xx110000306

Continues on next page

# 1 Description

## 1.7.1 Introduction

*Continued*

Pos No. see Figure above	X Position (mm)	Z Position (mm)	Axis 2 Angle (degrees)	Axis 3 Angle (degrees)
Pos 0	883	1243	0	0
Pos 1	160	1793	0	-74,5
Pos 2	483	365	0	+80
Pos 3	1500	453	+90	-74,5
Pos 4	1073	-483	+150	-100
Pos 5	-163	367	+150	+80
Pos 6	247	776	-90	+80
Pos 7	-1180	453	-90	-74,5
Pos 8	-1107	130	-90	-100

# 1 Description

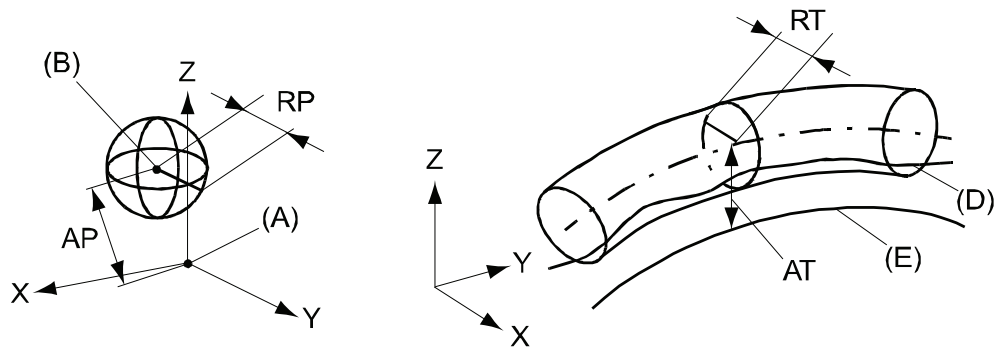
## 1.7.2 Performance according to ISO 9283

### 1.7.2 Performance according to ISO 9283

#### General

At rated maximum load, maximum offset and 1.6 m/s velocity on the inclined ISO test plane, with all six axes in motion. Values in the table below are the average result of measurements on a small number of robots. The result may differ depending on where in the working range the robot is positioning, velocity, arm configuration, from which direction the position is approached, the load direction of the arm system. Backlashes in gearboxes also affect the result.

The figures for AP, RP, AT and RT are measured according to figure below.



xx080000424

Pos	Description	Pos	Description
A	Programmed position	E	Programmed path
B	Mean position at program execution	D	Actual path at program execution
AP	Mean distance from programmed position	AT	Max deviation from E to average path
RP	Tolerance of position B at repeated positioning	RT	Tolerance of the path at repeated program execution

Description	IRB 1510ID-4/1.5
Pose repeatability, RP (mm)	0.05
Pose accuracy, AP <sup>i</sup> (mm)	0.05
Linear path repeatability, RT (mm)	0.35
Linear path accuracy, AT (mm)	1.3
Pose stabilization time, (PSt) to within 0.2 mm of the position (s)	0.1

<sup>i</sup> AP according to the ISO test above, is the difference between the taught position (position manually modified in the cell) and the average position obtained during program execution.

The above values are the range of average test results from a number of robots.

### 1.7.3 Velocity

#### 3-phase power supply

Axis No.	IRB 1510ID-4/1.5
1	130 °/s
2	140 °/s
3	140 °/s
4	320 °/s
5	380 °/s
6	460 °/s

#### 1-phase power supply

When the robot uses a single phase power supply, like with Compact controller, the performance regarding max axis speed is reduced, see table below. The reduced top speed can be increased if the power supply minimum voltage is higher than the default setting 187 V (220x0.85). See, "Mains tolerance min", in the Technical reference manual - System Parameters "How to optimize drive system parameters". Note that the robot acceleration is not affected by the single phase power supply. Thus the cycle time may not be affected at all. To test the cycle RobotStudio can be used. The RobotStudio also allows modification of "Mains tolerance min".

Axis No.	IRB 1510ID-4/1.5
1	130 °/s
2	117 °/s
3	109 °/s
4	320 °/s
5	341 °/s
6	460 °/s

# 1 Description

---

## 1.7.4 Robot stopping distances and times

### 1.7.4 Robot stopping distances and times

---

#### Introduction

The stopping distances and times for category 0 and category 1 stops, as required by EN ISO 10218-1 Annex B, are listed in *Product specification - Robot stopping distances according to ISO 10218-1 (3HAC048645-001)*.

### 1.8 Customer connections



#### Note

No customer/application connections available for IRB 1510ID-4/1.5.

# 1 Description

---

## 1.9 Maintenance and troubleshooting

### 1.9 Maintenance and troubleshooting

---

#### General

The robot requires only a minimum maintenance during operation. It is designed to make it as easy to service as possible:

- Maintenance free AC motors are used.
- Oil and grease are used for the gear boxes.
- The cabling is routed for longevity, and in the unlikely event of a failure, its modular design makes it easy to change.
- It has a program memory “battery low” alarm.

---

#### Maintenance

The maintenance intervals depend on the use of the robot, the required maintenance activities also depends on selected options. For detailed information on maintenance procedures, see Product Manual - IRB 1510.



## 2 Specification of variants and options

### 2.1 Introduction to variants and options

---

#### General

The different variants and options for the IRB 1510 are described in the following sections. The same option numbers are used here as in the specification form.

The variants and options related to the robot controller are described in the product specification for the controller.

## 2 Specification of variants and options

### 2.2 Manipulator

### 2.2 Manipulator

#### Variants

Option	IRB Type	Handling capacity (kg)/Reach (m)
435-149	1510ID	4/1.5

#### Protection

Option	Name	Description
287-4	Standard	IP 40

#### Mounting position

Option	Name	Description
224-2	Inverted mounting	For inverted mounting of the manipulator.

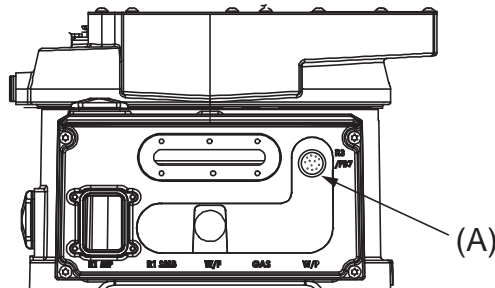


#### Note

Manipulators delivered for floor mounting must have the option added before changing mounting position to inverted.

#### Resolver connection, axis 7

A connection for resolver signals axis 7 located on the base.



xx110000304

Pos	Description
A	Resolver connection on base, option 864-1.

#### Application interface connection type

Option	Name	Description
17-7	No application interface	

Continues on next page

### Electronic Position Switches (EPS)

Electronic Position Switches (EPS) is an additional safety computer in the controller, with the purpose of providing safe output signals representing the position of robot axes. The output signals are typically connected to cell safety circuitry and/or a safety PLC which takes care of interlocking the robot cell, for example in order to prevent robot and operator to enter a common area simultaneously. See *Application manual - Electronic Position Switches*.


### Warranty

For the selected period of time, ABB will provide spare parts and labour to repair or replace the non-conforming portion of the equipment without additional charges. During that period, it is required to have a yearly Preventative Maintenance according to ABB manuals to be performed by ABB. If due to customer restrains no data can be analyzed in the ABB Ability service *Condition Monitoring & Diagnostics* for robots with OmniCore controllers, and ABB has to travel to site, travel expenses are not covered. The Extended Warranty period always starts on the day of warranty expiration. Warranty Conditions apply as defined in the Terms & Conditions.



#### Note

This description above is not applicable for option *Stock warranty* [438-8]

Option	Type	Description
438-1	Standard warranty	Standard warranty is 12 months from <i>Customer Delivery Date</i> or latest 18 months after <i>Factory Shipment Date</i> , whichever occurs first. Warranty terms and conditions apply.
438-8	Stock warranty	<p>Maximum 6 months postponed start of standard warranty, starting from factory shipment date. Note that no claims will be accepted for warranties that occurred before the end of stock warranty. Standard warranty commences automatically after 6 months from <i>Factory Shipment Date</i> or from activation date of standard warranty in WebConfig.</p> <p> <b>Note</b> Special conditions are applicable, see <i>Robotics Warranty Directives</i>.</p>

## 2 Specification of variants and options

---

### 2.3 Floor cables

### 2.3 Floor cables

---

#### Manipulator cable length

Option	Lengths
210-2	7 m
210-3	15 m

## 2.4 Process

### 2.4.1 Process

#### Process module

Option	Type	Description
768-1	Empty cabinet small	See <i>Product specification - Controller IRC5 with FlexPendant</i> , see chapter 2.2.1

#### Installation kit

Option	Type	Description
715-1	Installation kit	See <i>Product specification - Controller IRC5 with FlexPendant</i> , chapter 2.2.1

#### WeldGuide IV

Weldguide IV provides tracking functionality by reading the true impedance values close to the arc at 25 kHz then guides the robot to the correct path. Weldguide IV is designed to track difficult welding joint variations resulting from cast components or other pre-process problems.

Option	Type	Description
992-1	Basic	Occupies one slot and one Ethernet port. Digital I/O or AD Combi I/O is needed for WeldGuide functions. Requires options WG Sensor [994-1] or [995-1], and WeldGuide Multipass [815-2]. Not together with option UL/CSA [429-1].
992-2	Advanced	Includes all <i>Basic</i> functionality and adaptive fill. This feature allows the robot to adjust to the changes in joint width, the weave stroke will increase or decrease, and the travel speed will be adjusted accordingly. Occupies one slot and one Ethernet port. Digital I/O or AD Combi I/O is needed for WeldGuide functions. Requires options WG Sensor [994-1] or [995-1], and WeldGuide Multipass [815-2]. Not together with option UL/CSA [429-1].

## 2 Specification of variants and options

---

### 2.4.2 Process equipment

### 2.4.2 Process equipment

---

#### Torch service

Option	Type	Description
1037-1	ABB TSC 2013	ABB Torch Service Center. Including: Cleaner, cutter and BullsEye. Occupies I/O signals Dig. 5In/2Out. Requires option Base Dig. 16in/16Out [1541-1].
1037-5	BullsEye	BullsEye stand alone. Requires options RW Arc [633-4], and BullsEye [652-1] or RW Cutting [951-1].

## 2.5 User documentation

---

### User documentation

The user documentation describes the robot in detail, including service and safety instructions.



#### Tip

All documents can be found via myABB Business Portal, [www.abb.com/myABB](http://www.abb.com/myABB).

**This page is intentionally left blank**



## 3 Accessories

### 3.1 Introduction to accessories

---

#### General

There is a range of tools and equipment available, especially designed for the manipulator.

---

#### Basic software and software options for robot and PC

For more information, see *Product specification - Controller IRC5* .

---

#### Robot peripherals

- Motor Units

**This page is intentionally left blank**

# Index

## A

Absolute Accuracy, calibration, 22  
ambient temperature, 17

## C

cables, 44  
calibration  
    Absolute Accuracy type, 21  
    standard type, 21  
calibration, Absolute Accuracy, 22  
Calibration Pendulum, 23  
CalibWare, 21  
category 0 stop, 38  
category 1 stop, 38  
connections, 39

## D

dimensions, 12  
documentation, 47

## E

EPS, 16

## F

fastening holes, 20  
fine calibration, 23

## H

handling capacity, 11  
humidity, 17

## I

instructions, 47

## L

load areas, 30  
load diagrams, 25

## M

maintenance, 40  
manuals, 47  
motion, 34  
mounting, 11, 18

equipment, 30

## N

noise level, 11

## O

options, 41

## P

power consumption, 11  
product standards, 14  
protection, 17

## R

reach, 11  
robot versions, 11

## S

safety standards, 14  
service instructions, 47  
standards, 14  
    EN IEC, 14  
    EN ISO, 14  
    protection, 17  
standard warranty, 43  
stock warranty, 43  
stopping distances, 38  
stopping times, 38

## T

temperature, 17  
tool flange, 33

## U

user documentation, 47

## V

variants, 41–42  
velocity, 37  
versions, 11

## W

warranty, 43  
weight, 11  
working range, 16  
wrist torque, 29







**ABB AB**

**Robotics & Discrete Automation**

S-721 68 VÄSTERÅS, Sweden

Telephone +46 10-732 50 00

**ABB AS**

**Robotics & Discrete Automation**

Nordlysvegen 7, N-4340 BRYNE, Norway

Box 265, N-4349 BRYNE, Norway

Telephone: +47 22 87 2000

**ABB Engineering (Shanghai) Ltd.**

Robotics & Discrete Automation

No. 4528 Kangxin Highway

PuDong New District

SHANGHAI 201319, China

Telephone: +86 21 6105 6666

**ABB Inc.**

**Robotics & Discrete Automation**

1250 Brown Road

Auburn Hills, MI 48326

USA

Telephone: +1 248 391 9000

**[abb.com/robotics](http://abb.com/robotics)**